



MAY 2010

NEWSLETTER

Meeting Date: May 27, 2010

**PLACE: Agricultural & Industrial Museum
217 W Princess St., York, PA 17403**

TIME: 7:00 PM

PROGRAM: Restoration Ford Model A Truck - Wooden Body

PRESIDENT'S MESSAGE

Hello all,

Well, I guess it's official.....we're famous! An article on our guild was in the York Daily Record recently. You can find it here: http://www.ydr.com/ci_15055910?IADID=Search-www.ydr.com-www.ydr.com and I also printed it out and plan to bring it to our next meeting for all to see. My thanks to Wade Malcolm for a job well done. I feel he made us sound like a very enticing group, now we'll just have to wait and see if we're overrun with hundreds of new members!

See you all soon, Mark

THIS MONTH'S MEETING

We welcome, Mike Ryan, as our speaker this month. This will be our third attempt to hear from Mike, first it was the flu and then a blizzard that postponed our meeting. We are hopeful that this the third scheduled event will be the charmed one! Mike's 35 year career was in the electronics field, working first for York Telephone and then GTE. Mike started working with wood in junior high school after taking up wood shop. He had been making family Christmas gifts for about 12 years, going through 3 scroll saws in the process. He enjoyed designing his own patterns using Adobe Suite. In 2001, his wife bought him two Model A Ford trucks. He rebuilt the chassis and then had to rebuild the wooden body. This is the reason he now has a nice little wood shop. The truck has been at car shows (some by request), on TV, in magazines and newspapers, and even on Ford's 100th Anniversary web site back in 2003. It has been his weekend thrill for the last 6 years, taking it to shows and talking about Model A's and woodwork until he is hoarse. He was featured in Lowe's publication The Woodpost in 2007. Mike will bringing "Ethel" (his truck - weather permitting) and some of his projects along for all to view. Don't miss this meeting!

APRIL MEETING

At the meeting in April, we heard from our own member, Kari Hultman. She shared her expertise and knowledge about hand planes. Kari has been making her own planes for several years. The information that she provided to the group was undoubtedly better than the same information you could gain by reading books. Her perseverance, skill and ingenuity are shown in these sample planes.



SHOW & TELL

Ray Parsons shares the unusual dovetail saw that he acquired from the late Guild member, Steve Cook. The saw has small teeth at the front and larger teeth towards the back. This style helps to cut sharp and clean dovetails.



SHOW & TELL



Lloyd Shellman brought in the wood watchcase that he made. He also shared the special jig he constructed for shortening angled legs on stools. This was a special project for a client and Lloyd had four stools that needed to be reduced in height.



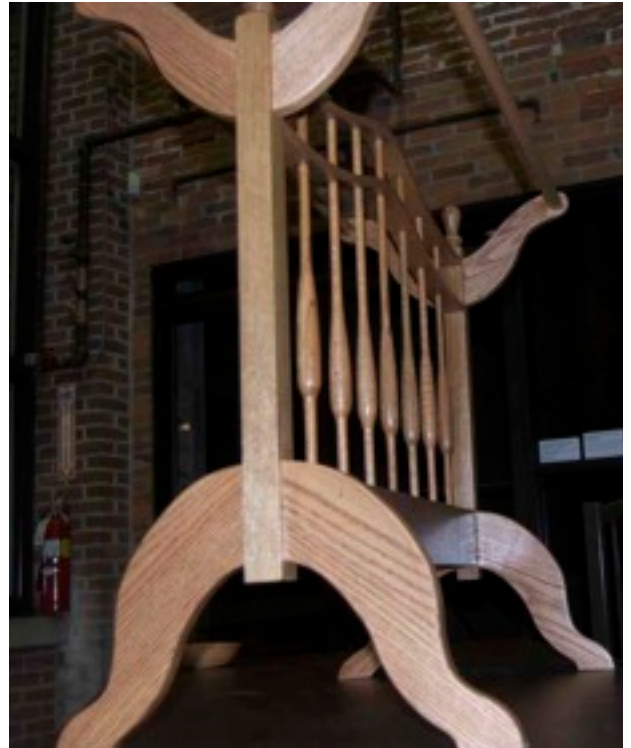
Don Titus crafted this bowl out of cherry. The graining of the wood is certainly beautiful!



SHOW & TELL



Tom Elledge made this quilt rack using oak. Note the interesting design in the spindles.



Show & Tell

Is one of the interesting features of our monthly meetings. It is a way for you to showcase your latest project. You can also share the things that you may have learned during the construction, with our members.

We also welcome photos of your works in progress for publication in the newsletter. Simply email the photos and a description of your work to the editor at: stwg@comcast.net



Report on the: MINWAX CONTEST

April 16, 2010

Mr. Dennis Kunkle
Susquehanna Trail Woodworkers Guild
442 West Philadelphia St.
York, PA 17401

Dear Mr. Kunkle:

Thank you for submitting your entry to the Minwax® 2009 Community Craftsman Award program. Your entry demonstrates the strong spirit of community service sought for recognition in the 2009 Minwax® Community Craftsman Award program.

Although the judges made another choice, they were impressed by the quality of your work and the spirit with which it was undertaken. As a token of our appreciation, and a thank you for entering the award program, the Minwax team is pleased to send you the enclosed DVD, featuring expert woodworking tips by leading wood finishing expert and author Bruce Johnson.

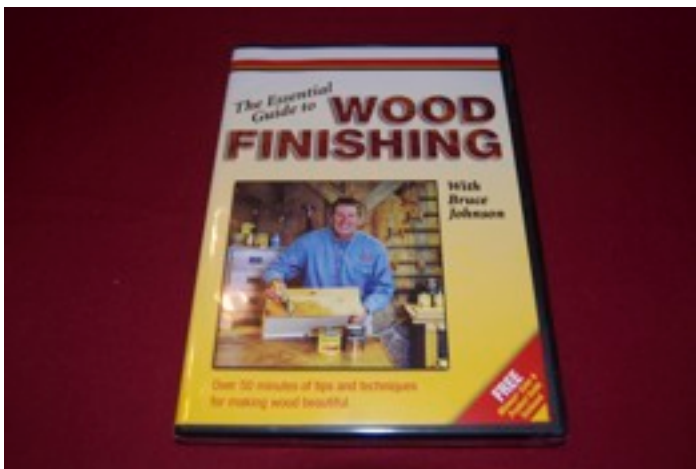
Again, thank you for entering the 2009 Minwax® Community Craftsman Award program. We wish you years of fulfilling woodworking and successful projects.

Sincerely,

The Minwax Team
Sherwin-Williams Wood Care Products

10 Mountainview Road • Upper Saddle River, NJ 07458-1934 • (201) 818-7500 • Fax (201) 818-7605

As you can see from the letter, we did not win first place with our entry showcasing the restoration of the lathe for the York County Heritage Trust. We did however receive a DVD on finishing by Bruce Johnson from Minwax. This DVD will be added to the Guild's Library. And will be available to the members as are all books and DVD's. Our thanks to all who helped in the restoration of the lathe. Demonstrations using the lathe are a big hit for the students during school tours at the museum. It was also a prominent feature during Family Fun Days at the museum.



2010 Membership Dues Are Due Mail to:

NETWORKING & IDEA
SHARING

Allen Mark Brittell

LIBRARY - BOOKS &
VIDEOS

EXCELLENT SPEAKERS

2643 Stoverstown Road

MONTHLY NEWSLETTER

DISCOUNTS

**Spring Grove, PA
17362**

SHOW & TELL

Officers Contact Information

President	Mark Bortner	717.235.2930	msb-services@comcast.net
1st Vice President	Ray Parsons	717.817.4337	atbrigider@yahoo.com
2nd Vice President	Palmer Burke	717.757.1960	rdermota@aol.com
Treasurer	Allen Mark Brittell	717.747.0006	AllenMark@allstate.com
Newsletter	Julie Kemper-Kunkle	717.968.5651	stwg@comcast.net
Photographer	Bob Aspey	717.308.2048	wood6@comcast.net

www.stwg.org

We need your help to keep STWG's website current STWG. On the next page is a listing of the links that are currently posted on our website. If your favorite link is not listed here or if we have forgotten a link that you use on a regular basis, please forward the name of the site and the address to: stwg@comcast.net. The site can be added for all members to benefit from.

[Cayce & Co www.cayceco.com/](http://www.cayceco.com/)

[C H Wilke www.chwilke.com/](http://www.chwilke.com/)

[Free State Timbers www.freestatetimbers.com/](http://www.freestatetimbers.com/)

[Groff's Lumber Co www.groffslumber.com/](http://www.groffslumber.com/)

[Old Mill Cabinet Shoppe www.oldemill.com/](http://www.oldemill.com/)

[Two Guys Lumber www.Twoguyslumber.com/](http://www.Twoguyslumber.com/)

[Horton-Brasses Inc www.horton-brasses.com](http://www.horton-brasses.com)

[Klingspor Co www.klingspor.com/](http://www.klingspor.com/)

[Lee Valley & Veritas www.leevalley.com](http://www.leevalley.com)

[Rockler www.Rockler.com](http://www.Rockler.com)

[Woodcraft www.woodcraft.com/](http://www.woodcraft.com/)

[Woodcraft Plans www.woodcraftplans.com/](http://www.woodcraftplans.com/)

[Woodworkers Guild of America
www.wwgoa.com](http://www.wwgoa.com)

[American Woodworker
www.americanwoodworker.com/](http://www.americanwoodworker.com/)

[Carving www.carvingmagazine.com/](http://www.carvingmagazine.com/)

[Craft & Design www.craftanddesign.net/](http://www.craftanddesign.net/)

[Crafts Report www.craftsreport.com/](http://www.craftsreport.com/)

[Fine Woodworking www.finewoodworking.com/](http://www.finewoodworking.com/)

[Fox Chapel Publishing
www.foxchapelpublishing.com/](http://www.foxchapelpublishing.com/)

[Get Woodworking www.getwoodworking.com/](http://www.getwoodworking.com/)

[Highland Woodworking
www.highlandwoodworking.com](http://www.highlandwoodworking.com)

[Internet WoodWorking
www.internetwoodworking.com/](http://www.internetwoodworking.com/)

[Jeff Greef Woodworking
www.jeffgreefwoodworking.com/](http://www.jeffgreefwoodworking.com/)

[Modern Woodworking
www.modernwoodworking.com/](http://www.modernwoodworking.com/)

[More Wood Turning www.morewoodturning.net/](http://www.morewoodturning.net/)
[Popular Woodworking www.popularwoodworking.com](http://www.popularwoodworking.com)

[Popular Woodworking Shop
www.popularwoodworkingshop.com/](http://www.popularwoodworkingshop.com/)

[Saw Mill www.sawmillmag.com/](http://www.sawmillmag.com/)

[Shop Notes www.shopnotes.com/](http://www.shopnotes.com/)

[Shop Smith HandsOn www.shopsmithhandson.com/](http://www.shopsmithhandson.com/)

[Weekend Woodcrafts www.weekendwoodcrafts.com/](http://www.weekendwoodcrafts.com/)

[WOOD www.woodmagazine.com/](http://www.woodmagazine.com/)

[Woodcraft www.woodcraftmagazine.com](http://www.woodcraftmagazine.com)

[Wood Ezine www.woodezine.com/](http://www.woodezine.com/)

[WoodNet www.woodnet.net/](http://www.woodnet.net/)

[Wood Shop News www.woodshopnews.com/](http://www.woodshopnews.com/)

[WoodSmith www.woodsmith.com/](http://www.woodsmith.com/)

[Wood Turning Design www.woodturningdesign.com/](http://www.woodturningdesign.com/)

[Wood Turns www.woodturns.com/](http://www.woodturns.com/)

[WoodWork Web www.woodworkweb.com](http://www.woodworkweb.com)

[WoodWorker West www.woodwest.com/](http://www.woodwest.com/)

[Woodworkers Journal www.woodworkersjournal.com/](http://www.woodworkersjournal.com/)

[WoodWorking www.woodworking.com/](http://www.woodworking.com/)

[Wood Working www.woodworking.org](http://www.woodworking.org)

[Wood Working News www.woodworking-news.com/](http://www.woodworking-news.com/)

[Woodworking OnLine www.woodworkingonline.com/](http://www.woodworkingonline.com/)

[Woodworks and Craft www.woodworksandcrafts.com/](http://www.woodworksandcrafts.com/)

[Work Bench www.workbenchmagazine.com/](http://www.workbenchmagazine.com/)

SPONSORS

Olde Mill Cabinet Shoppe

1600 Camp Betty Washington Rd.
York PA. 17402
717-755-8884
www.eldemill.com

Business Hours:
Mon/Wed/Thur/Fri
9am - 4pm EST.
Tues/Sat
Appointment Only



Cooke's Sharpening & Grinding Service
(717) 845-SAWS (7297)
(717) 792-8245
(717) 792-8246 fax

301 N. Main Street
York New Salem, PA 17371


HOURS
Monday - Thursday 8:30 am - 5 pm
Friday 8 am - 4:30 pm



SUPPLIERS

WMCo HARDWOOD LUMBER

The WALTER McILVAIN CO.
338 Brickcrafters Rd.
New Oxford PA 17350
Phone 717 624-31-95



Groff & Groff Lumber
858 Scotland Road
Quarryville, PA 17566

Owen H. Groff (800) 342-0001
Christ B. Groff (717) 284-0001
FAX (717) 284-2400

Hearne Hardwoods, Inc.
Extraordinary Hardwood Lumber
200 Whiteside Drive
Oxford, PA 19363
888-814-0007
www.hearnehardwoods.com



KLINGSPOR
The Most Sanding Power for Your Money![®]
1-800-645-5555


D&D Earth & Wood
Custom Sawing - Lumber Drying
Dean L. Krout

264 Old Leacock Road
Gordonville, PA. 17529


717-278-5261 Cell
717-768-8427 Eve. 7-9 pm

KLINGSPOR'S WOODWORKING SHOP
"Quality Tools and Supplies for the Woodworker"

WOODWORKERS GUILD OF AMERICA[®]



WE HAVE THE LARGEST SELECTION OF WOOD TO FIND WOODS IN THE REGION. ASK AND WE SHALL FIND.



FREESTATE TIMBERS
FINE DOMESTIC AND EXOTIC HARDWOODS



Woodworking Machinery, Tooling & Supplies
221-B Cockeysville Rd. Hunt Valley, MD 21030
410-771-0213

We are now a Rockler Hardware partner store.
Store hours: Mon-Fri 8:00-5:00, Sat 9:00-1:00.



**442 W PHILADELPHIA ST
YORK PA 17401**

ADDRESS SERVICES REQUESTED

If you are receiving this newsletter by mail and are able to receive it by email, please provide Allen Brittell with your e-mail address. This will help save a tree giving you more wood for use in your workshop!

If you have a change of address, either postal or email, remember to let us know.

If you have an article or photos that you would like to have published, please contact the Newsletter Editor at: stwg@comcast.net