

**OCTOBER**



**NEWSLETTER**

**MEETING DATE:** October 26, 2006

**PLACE:** Agricultural & Industrial Museum of York

**TIME:** 7:00

**PROGRAM:** Speakers: Tim Graham

**TOPIC:** Timber Framing

## **PRESIDENT'S MESSAGE**

We will soon begin a new year. We will have nominations for the various offices in this meeting with elections in the meeting after Thanksgiving. New officer will take their positions in Jan.

One of the most important aspects in woodworking is proportion. Have you ever looked at a finely crafted table, excellent joints and finish, but something is wrong. Is it too high, the top too small or thin, are the legs too close together or too thick, etc? There are so many things that can go wrong before you pick up the first piece of lumber. I would like to have a meeting on this subject but am unsure who to ask to be a speaker. Any volunteers? Or would this subject be best handled by a joint discussion? We'll talk more about this at our meeting.

## **THIS MONTH'S MEETING**

Our Presenter for the October meeting is Tim Diener. Tim is a Designer at Lancaster County Timber Frames.

The presentation will be a narrated slide show and the following areas will be covered.

- Design
- Layout
- Cutting the Timbers
- Prefitting on the shop floor
- Erection/Raising
- Finished Frames
- Completed Homes

## LAST MONTH'S MEETING



Our speaker last month was Mr. Brian Graham from The Cayce Company located in Hunt Valley Maryland. Brian gave an excellent talk on tuning up a bandsaw. Some of the things that he talked about were the different types of lubricants you can use on the different parts of the saw, different types of blade guides, wheel alignment and the different types of bandsaw blades. He also talked about how to get the correct tension on the blades.

Brian donated 2 new Jet clamps and a few router plates that we will be raffling off at the next meeting.

## FOR SALE

Wallace direct drive 4" jointer on a wooden stand with a drawer that collects shavings. Easy to empty.

Contact Barry Hanna at: [mrlbh@aol.com](mailto:mrlbh@aol.com)

## THE CAYCE COMPANY WOODWORKERS OPEN HOUSE

The Cayce Company will be holding an open house on October 21-22. The Cayce Company carries many different brands of power tools and are now handling all the Rockler product. The show will feature Sale prices, Rebates, Door Prizes, Free Food and Drinks, Machine demos and Factory Reps.

The Cayce Company is located at: 221-B Cockeysville Rd. Hunt Valley, MD.

Phone 800-875-0213

## the WoodWorks Show

### SHOW LOCATION:

York Expo Center - Toyota Arena West

### HOURS:

FRIDAY 11 am - 5 pm

SATURDAY 10 am - 5 pm

SUNDAY 10 am - 3 pm

If you would like to attend the show for FREE you must sign up at the next meeting. There will be more information at the meeting about our participation at this show.

## FREE SKILLBUILDING DEMOS

### In the Spotlight

Non-stop demonstrations by experts and living legends from around the world.

Frank Klausz  
Jane Burke  
Jim Christiansen

### Back to Basics

Traditional woodworking demos the old-fashioned way, without electric power.

Don Weber

### Turning 'In

Interactive and cutting-edge demonstrations on the lathe by turners who extend the boundaries of turning.

Harry Memelink

### At the Bench

Continuous demonstrations focused on power tools, professional tips and techniques, and how-to instruction.

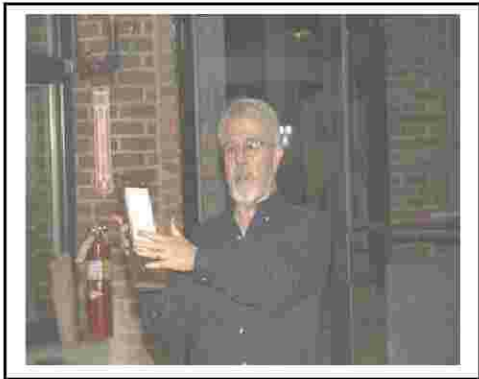
Barry Gross  
Bill Thompson  
David Powell  
Fred Matlack



# SHOW AND TELL



Bob Elser talks about the Windsor High Chair that he is making. Bob plans on painting the chair so he made it out of several different woods including Poplar, Red and White Oak. Bob recommends that if you are interested in making a Windsor Chair you should check out the book by Mike Bunbar called Making Windsor Chairs.

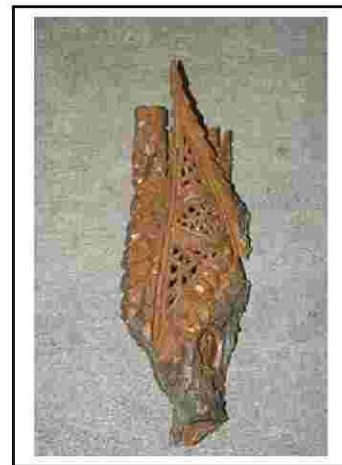


John Marsh made a simple device for holding his sharpening stones. There are pegs on the bottom that allows John to move it up for smaller stones. The wedges are then put in to lock it in place.



Left: Hackberry and Maple box. Turned and power carved with a 'v' tool. It was spray painted black.

Right: Cottonwood gnomehouse bark carving done at the Carvers Roundup in Honesdale PA held in June. Both items were done by Mike Galloway



## SUPPLIERS

### Sandy Pond

HARDWOOD INC.

921-A Lancaster Pike  
Quarryville, PA 17566

Mon-Sat 8-4

TOLL FREE: (800) 546-WOOD

<http://www.figuredhardwoods.com>

### Olde Mill Cabinet Shoppe

1600 Camp Betty Washington Rd.  
York PA, 17402  
717-755-8884

[www.oldemill.com](http://www.oldemill.com)

Business Hours:

Mon/Wed/Thur/Fri

9am - 4pm EST.

Tues/Sat

Appointment Only

### GROFF & GROFF LUMBER

858 Scotland Road  
Quarryville PA  
17566

Phone: 800-342-001

[www.grofflumber.com](http://www.grofflumber.com)

### W M Co

The WALTER McILVAIN CO.

338 Brickcrafters Rd.  
New Oxford PA 17350

Phone 717 624-31-95

**HARDWOOD LUMBER**

### Cooke's Sharpening and Grinding

1702 West King St  
York PA  
717-793-9527

# WILKE

MACHINERY COMPANY

MACHINERY POWER TOOLS



Call us at 717.764.5000

or

visit our website @ [www.wilkemachinery.com](http://www.wilkemachinery.com)

3230 Susquehanna Trail  
York, PA 17402