

SUSQUEHANNA TRAIL WOODWORKERS GUILD

SEPTEMBER 2005

NEW LETTER

MEETING DATE: September 22 2005

PLACE: Agricultural & Industrial Museum of York
SEE DIRECTIONS BELOW

TIME: 7:00

PROGRAM: Speaker: Lloyd Shellem an
Topic: HAND PLANES

PRESIDENT..... Ray Parsons 717-225-5312
VICE PRESIDENT..... Dennis Kunkle
TREASURE..... Lloyd Shellem an
SECRETARY..... Mike Galloway 717-757-2907
PROGRAMS..... Allen Brittell
CLUB PHOTOGRAPHER..... Bob Aspey
LIBRARIAN..... Charlie Galloway
SUSQUEHANNA TRAIL WOODWORKERS GUILD DUES
\$24.00 per year

CLUB EMAIL ADDRESS -- woodworkingclub@yahoo.com



President Ray Parsons talked about a wood plane that he felt was made from a piece of wood that would have been better used in a fireplace. The body of the plane was full of knots. Sam Delp however pointed out that the maker of this plane was very smart. He used the knot at just the right places to strengthen the plane. This plane has now gone from the fireplace to the mantel.

MEETING DIRECTIONS

From the south, take Rt. 83 or the Susquehanna Trail straight into York. Turn left at the Post Office (Princess Street) and proceed 2 1/2 blocks to the museum on your right. From the north, take George Street into York, through the square. Turn right at the post office and proceed 2 1/2 blocks to museum on your right. From the west, take Market Street into York, cross over the Codorus Creek, turn right at the light on Pershing Ave and go 2 blocks to the light on Princess Street. Turn right and the museum will be on your right. From the east, take Rt. 30 to George St and turn left (south) into the city. Go through the square and turn right at the post office (Princess Street) and proceed 2 1/2 blocks to the museum on your right. There is ample parking in front of the museum as well as the parking lot across the street.

THIS MONTH'S MEETING

Lloyd Shellem an will be our speaker for this month's meeting. Lloyd will be demonstrating the use of hand planes. He will show how to hone the plane iron and how to surface a board with a jack and smooth plane. Plan now to attend this meeting and try your hand at using a hand plane.

LAST MONTH'S MEETING

Our speaker for last month's meeting got his dates mixed up and was not able to attend our meeting. However Ray came to the rescue with a very good video called "Special Planes" by Jim Kingshott. In this 90 minute video Jim shares his skills and secrets on using many different types of wood planes like Rebate, Grooving, Compass, Molding planes and many more. Mr. Kingshott has been working with wood for over 50 years and has made furniture for British royalty. If you missed this meeting the video is available in our club video library.

CONEWAGO WOODCARVERS SHOW

East Berlin PA in the community building
October 29-30
10 am to 4pm

CHRISTMAS PROJECT

This year we are asking each member to make 1 or more toys that we can give to some organization (to be announced) to hand out to children. If you have any patterns for toys please bring them to the next meeting.

The toys will need to be completed and handed in at our club meeting on Dec. 6 2005 or before. We hope that everyone will participate in this project to give something back to the community and to promote the club.

TABLE SAW SAFETY TIP

1. Always stand to one side of the blade when sawing. Never stand directly in line with the blade. It has been calculated that material kicked back by a saw blade can travel at the speed of a bullet. Would you stand in front of a gun?
2. Never reach over the top of a rotating saw blade to pick up a piece of stock even with the guard in place. Either turn the saw off and wait for the blade to stop rotating or walk around to the back of the saw.

WOODWORKING TIP

Cabinet Squaring Blocks

Have you ever built a box or cabinet? Then you know how difficult it can be to square it up, and keep it that way while the glue dries. These blocks are simple to make and worth their weight in gold!

Step 1

Cut an 8" or 10" square from scrap 3/4" plywood.

Step 2

Use a dado blade or router to cut a 1/2" deep groove 3/4" wide down the center of the block.

Step 3

Cut or rout another groove perpendicular to the first.

Step 4

Use a hole saw or large spade bit to drill a 1-1/2" - 2" hole in the middle of the board, at the intersection of the two grooves. This hole will aid in alignment and help remove excess glue.



SHOW AND TELL



This model train was built to scale (1 inch to a foot) by Jerry Allison. This engine is still being built in Brookeville PA. This model runs.



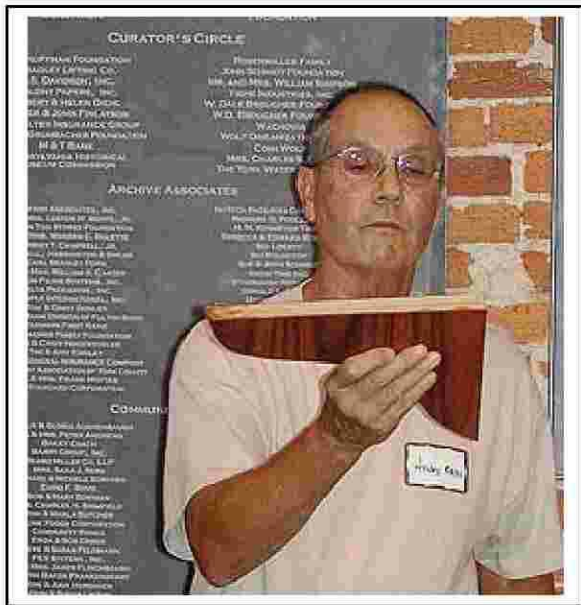
Mailbox banks by Dave Ferguson. Made from Cocobola and Chestnut. Finished with Tung Oil.



Scroll work by Phil Stough. Made from Cedar and Poplar. This is the 2nd one that Phil made



Banks by Dennis Kunkle. Made from Bubina, Walnut Burl, Birdseye Maple and Mahogany



Andy Obin shows how to make shelf bracket using keyhole hooks. Andy also showed how he makes mallets by cutting and gluing together several pieces of wood. The mallet shown was made from Teak.

SUPPLIERS

Sandy Pond

HARDWOOD INC.

921-A Lancaster Pike
Quarryville, PA 17566

Mon-Sat 8-4

TOLL FREE: (800) 546-WOOD

<http://www.figuredhardwoods.com>

Olde Mill Cabinet Shoppe

1600 Camp Betty Washington Rd.
York PA, 17402
717-755-8884

www.oldemill.com

Business Hours:

Mon/Wed/Thur/Fri

9am - 4pm EST.

Tues/Sat

Appointment Only

GROFF & GROFF LUMBER

858 Scotland Road
Quarryville PA
17566

Phone: 800-342-001

www.grofflumber.com

W M Co

The WALTER McILVAIN CO.

338 Brickcrafters Rd.

New Oxford PA 17350

Phone 717 624-31-95

HARDWOOD LUMBER

WILKE

MACHINERY COMPANY

MACHINERY POWER TOOLS



Call us at 717.764.5000

or

visit our website @ www.wilkemachinery.com

3230 Susquehanna Trail

York, PA 17402

Cooke's Sharpening and Grinding

3331 W. Market St.

York PA

717-793-9527